

Timberlane SAU#55, NH Historical Enrollment

School District: Timberlane, SAU#55

11/5/2012

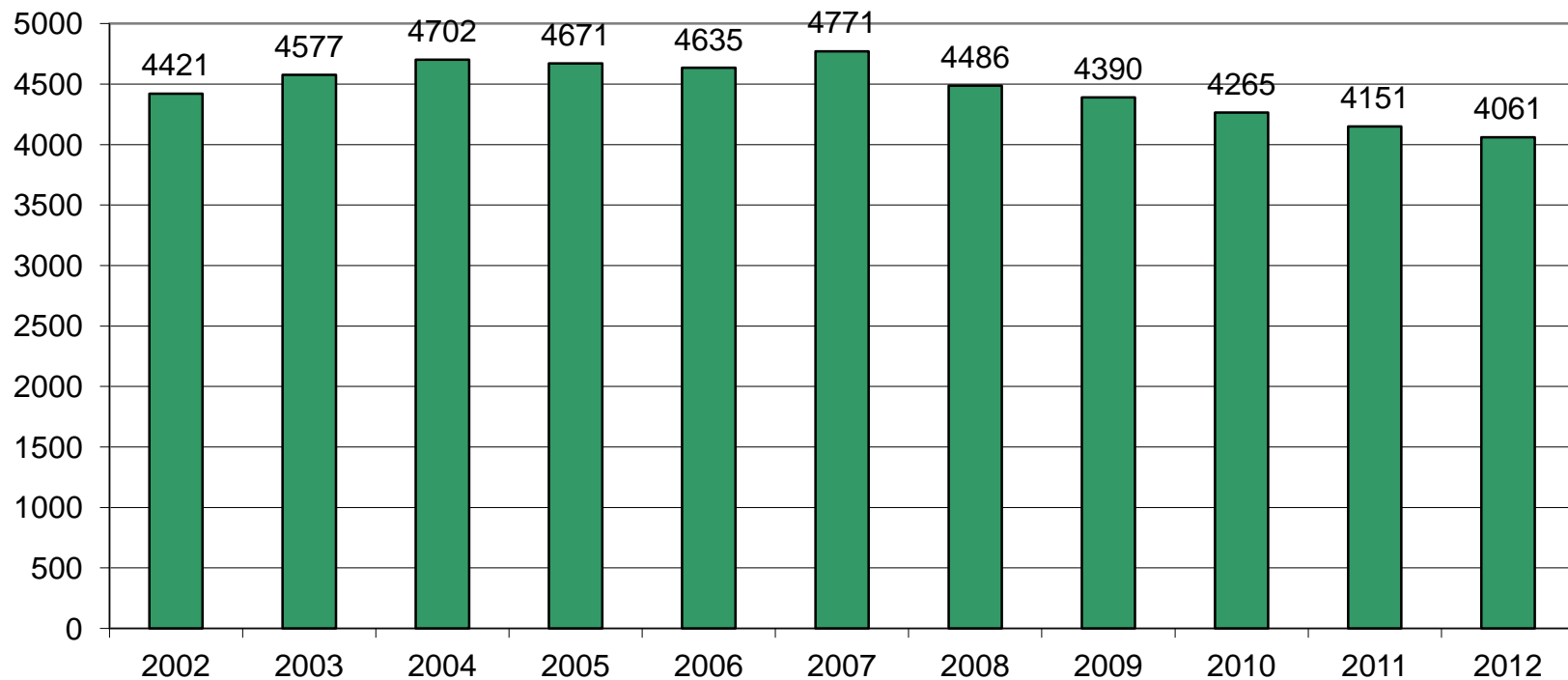
Historical Enrollment By Grade																			
Birth Year	Births	School Year	PK	K	1	2	3	4	5	6	7	8	9	10	11	12	UNGR	K-12	PK-12
1997	314	2002-03	66	82	354	335	371	370	366	397	397	370	346	365	300	268	34	4355	4421
1998	325	2003-04	53	85	374	363	338	370	376	373	416	411	366	345	361	315	31	4524	4577
1999	285	2004-05	25	84	362	390	380	346	391	377	382	419	413	368	346	369	50	4677	4702
2000	301	2005-06	31	88	336	364	375	376	355	382	394	385	418	402	363	347	55	4640	4671
2001	288	2006-07	75	67	341	324	364	376	367	354	383	393	379	411	413	388	0	4560	4635
2002	285	2007-08	111	253	285	346	328	355	387	363	360	392	392	363	406	430	0	4660	4771
2003	278	2008-09	47	258	302	279	324	329	345	371	360	371	365	372	367	396	0	4439	4486
2004	248	2009-10	74	215	300	310	289	326	330	351	371	355	363	352	372	382	0	4316	4390
2005	254	2010-11	76	218	265	296	301	290	336	327	348	371	341	369	353	374	0	4189	4265
2006	240	2011-12	95	209	246	274	292	310	295	340	334	344	353	335	368	356	0	4056	4151
2007	243	2012-13	96	238	241	252	273	290	312	290	334	334	329	354	332	386	0	3965	4061

Historical Enrollment in Grade Combinations									
Year	K-4	K-5	K-6	K-8	5-8	6-8	7-8	7-12	9-12
2002-03	1944	1878	2275	3042	1530	1164	767	2046	1279
2003-04	1959	1906	2279	3106	1576	1200	827	2214	1387
2004-05	1978	1953	2330	3131	1569	1178	801	2297	1496
2005-06	1925	1894	2276	3055	1516	1161	779	2309	1530
2006-07	1914	1839	2193	2969	1497	1130	776	2367	1591
2007-08	2065	1954	2317	3069	1502	1115	752	2343	1591
2008-09	1884	1837	2208	2939	1447	1102	731	2231	1500
2009-10	1844	1770	2121	2847	1407	1077	726	2195	1469
2010-11	1782	1706	2033	2752	1382	1046	719	2156	1437
2011-12	1721	1626	1966	2644	1313	1018	678	2090	1412
2012-13	1702	1606	1896	2564	1270	958	668	2069	1401

Historical Percentage Changes			
Year	K-12	Diff.	%
2002-03	4355	0	0.0%
2003-04	4524	169	3.9%
2004-05	4677	153	3.4%
2005-06	4640	-37	-0.8%
2006-07	4560	-80	-1.7%
2007-08	4660	100	2.2%
2008-09	4439	-221	-4.7%
2009-10	4316	-123	-2.8%
2010-11	4189	-127	-2.9%
2011-12	4056	-133	-3.2%
2012-13	3965	-91	-2.2%
Change		-390	-9.0%

Timberlane SAU#55, NH Historical Enrollment

PK-12, 2002-2012



Timberlane SAU#55, NH Projected Enrollment

School District: Timberlane, SAU#55

11/5/2012

Enrollment Projections By Grade*																				
Birth Year	Births		School Year	PK	K	1	2	3	4	5	6	7	8	9	10	11	12	UNGR	K-12	PK-12
2007	243	0	2012-13	96	238	241	252	273	290	312	290	334	334	329	354	332	386	0	3965	4061
2008	200	0	2013-14	100	178	280	244	250	275	296	310	289	334	320	327	355	339	0	3797	3897
2009	179	0	2014-15	104	162	209	284	240	253	281	295	309	288	320	319	328	363	0	3651	3755
2010	223.2	(est.)	2015-16	108	200	190	213	281	242	258	281	294	308	276	319	321	335	0	3518	3626
2011	217.04	(est.)	2016-17	112	195	236	193	210	284	246	257	280	294	292	275	321	328	0	3411	3523
2012	212.448	(est.)	2017-18	116	192	229	240	191	212	290	247	256	280	280	291	276	327	0	3311	3427
2013	206.3376	(est.)	2018-19	120	186	225	233	237	192	217	288	246	256	269	279	293	282	0	3203	3323
2014	207.6051	(est.)	2019-20	124	186	219	229	230	239	195	216	287	246	242	268	280	299	0	3136	3260
2015	213.3261	(est.)	2020-21	128	191	218	223	226	232	244	194	215	287	238	241	269	285	0	3063	3191
2016	211.3514	(est.)	2021-22	132	189	225	222	220	228	237	243	193	214	275	237	242	274	0	2999	3131
2017	210.2136	(est.)	2022-23	136	189	222	229	219	222	233	236	242	193	205	274	238	246	0	2948	3084

*Projections should be updated on an annual basis.

Based on an estimate of births

Based on children already born

Based on students already enrolled

Projected Enrollment in Grade Combinations*									
Year	K-4	K-5	K-6	K-8	5-8	6-8	7-8	7-12	9-12
2012-13	1702	1606	1896	2564	1270	958	668	2069	1401
2013-14	1623	1523	1833	2456	1229	933	623	1964	1341
2014-15	1533	1429	1724	2321	1173	892	597	1927	1330
2015-16	1492	1384	1665	2267	1141	883	602	1853	1251
2016-17	1476	1364	1621	2195	1077	831	574	1790	1216
2017-18	1470	1354	1601	2137	1073	783	536	1710	1174
2018-19	1410	1290	1578	2080	1007	790	502	1625	1123
2019-20	1422	1298	1514	2047	944	749	533	1622	1089
2020-21	1462	1334	1528	2030	940	696	502	1535	1033
2021-22	1453	1321	1564	1971	887	650	407	1435	1028
2022-23	1450	1314	1550	1985	904	671	435	1398	963

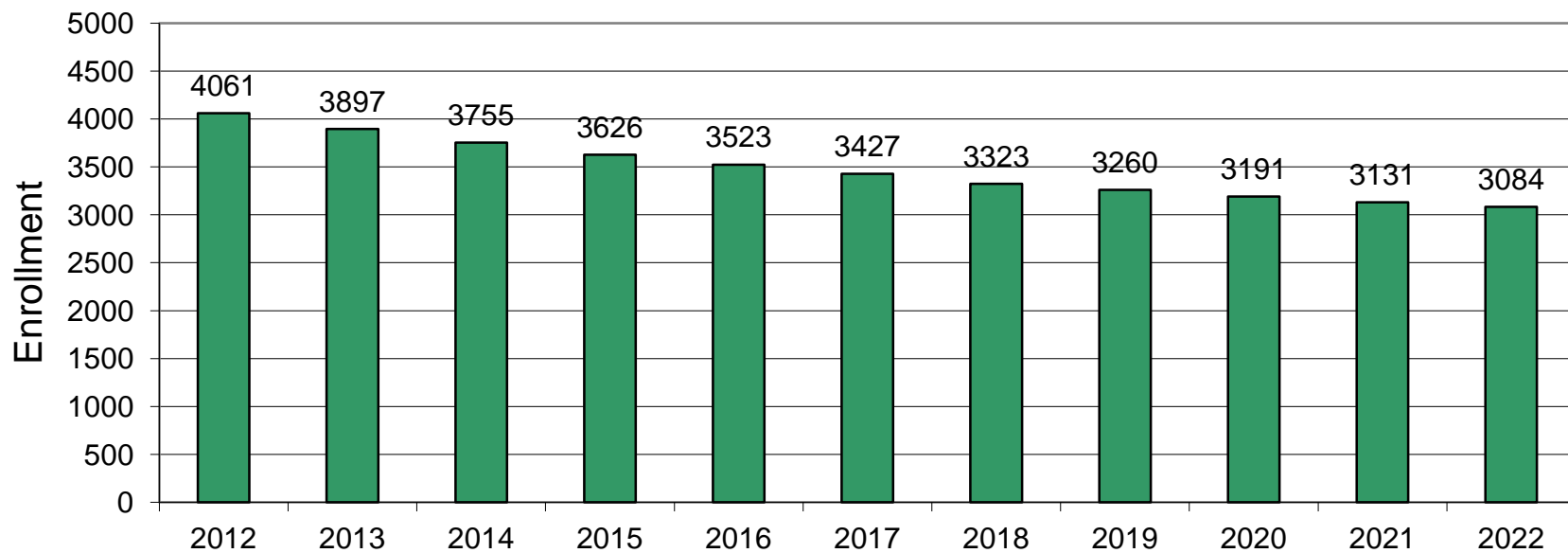
Projected Percentage Changes			
Years	K-12	Diff.	%
2012-13	3965	0	0.0%
2013-14	3797	-168	-4.2%
2014-15	3651	-146	-3.8%
2015-16	3518	-133	-3.6%
2016-17	3411	-107	-3.0%
2017-18	3311	-100	-2.9%
2018-19	3203	-108	-3.3%
2019-20	3136	-67	-2.1%
2020-21	3063	-73	-2.3%
2021-22	2999	-64	-2.1%
2022-23	2948	-51	-1.7%
Change		-1017	-25.6%

See "Reliability of Enrollment Projections" section of accompanying letter.

Projections are more reliable for Years 1-5 in the future than for Years 6 and beyond.

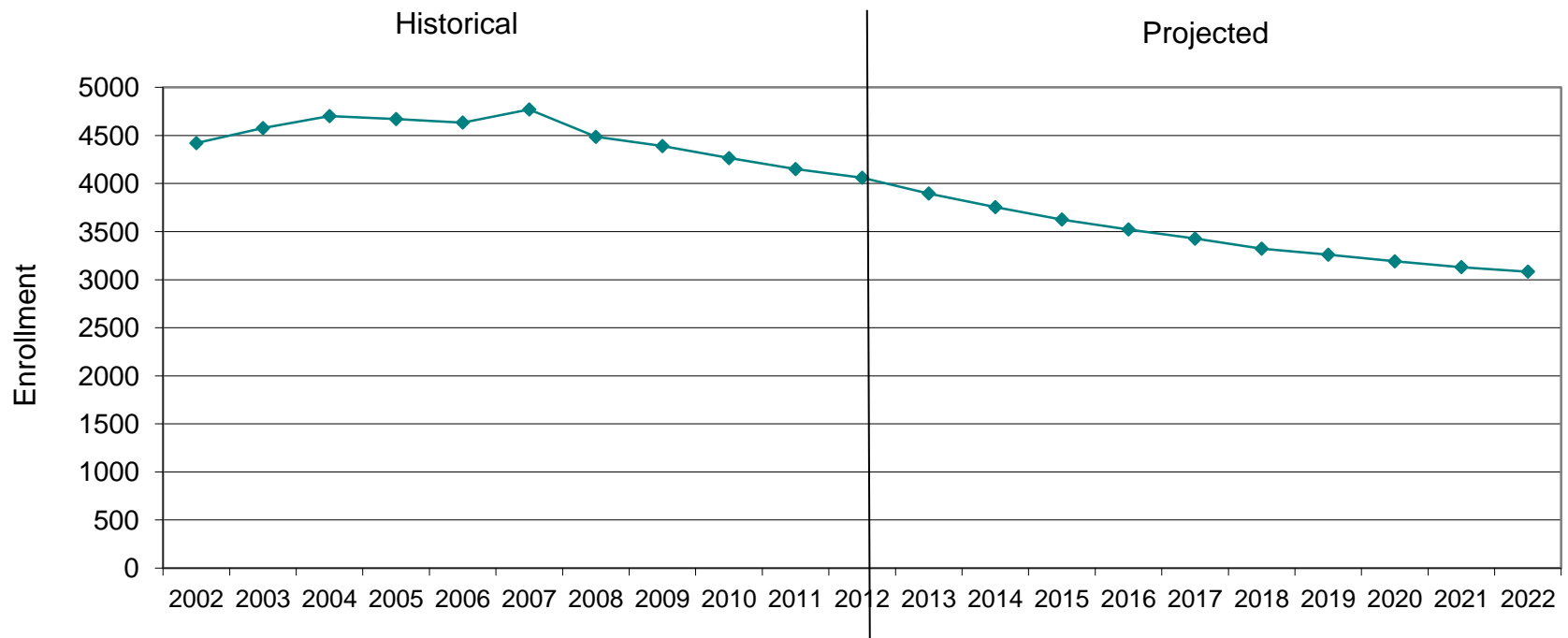
Timberlane SAU#55, NH Projected Enrollment

PK-12 TO 2022 Based On Data Through School Year 2012-13

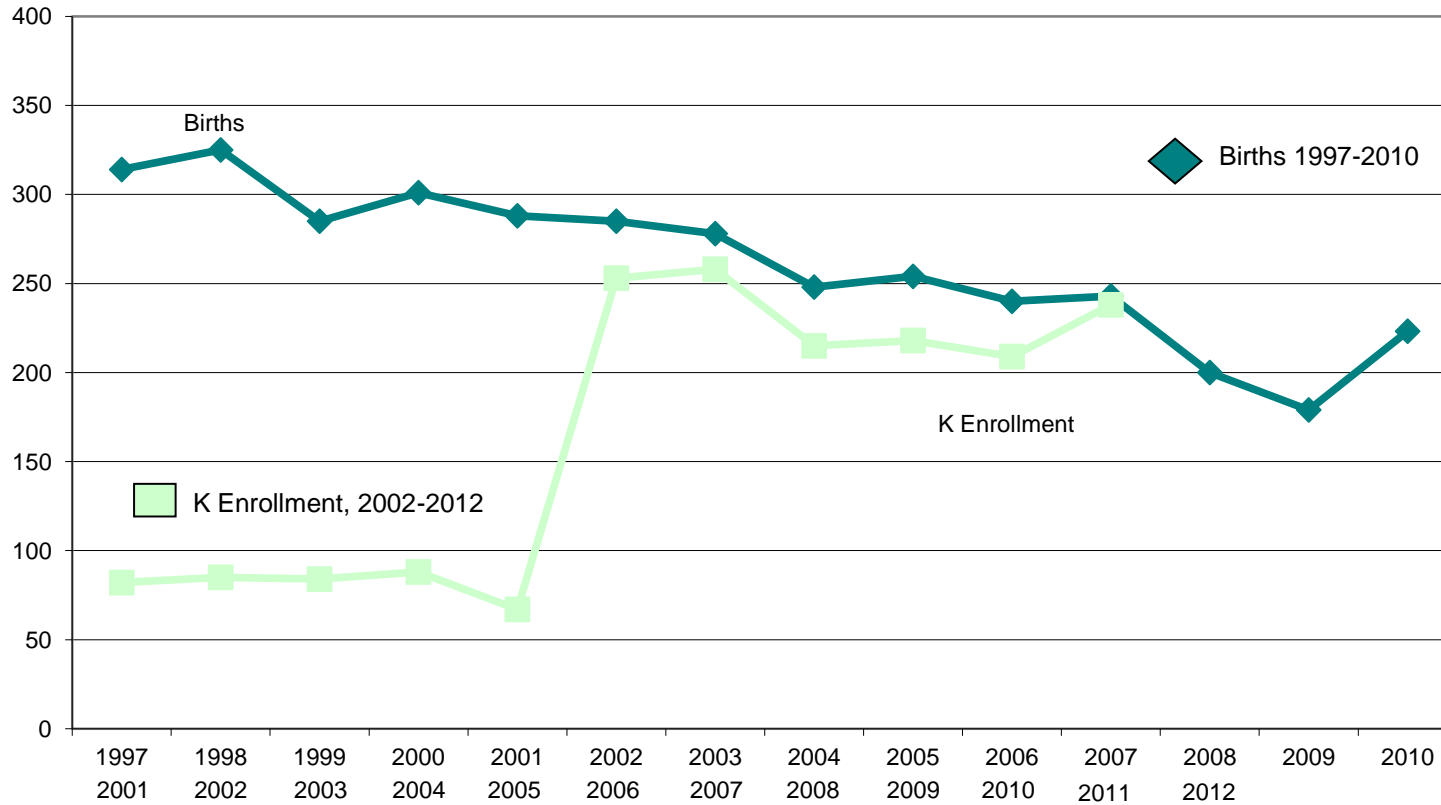


Timberlane SAU#55 Historical & Projected Enrollment

PK-12, 2002-2022



Timberlane SAU#55 Birth-to-Kindergarten Relationship



Atkinson, NH, SAU#55 Historical Enrollment

School District: Atkinson, NH SAU#55

11/5/2012

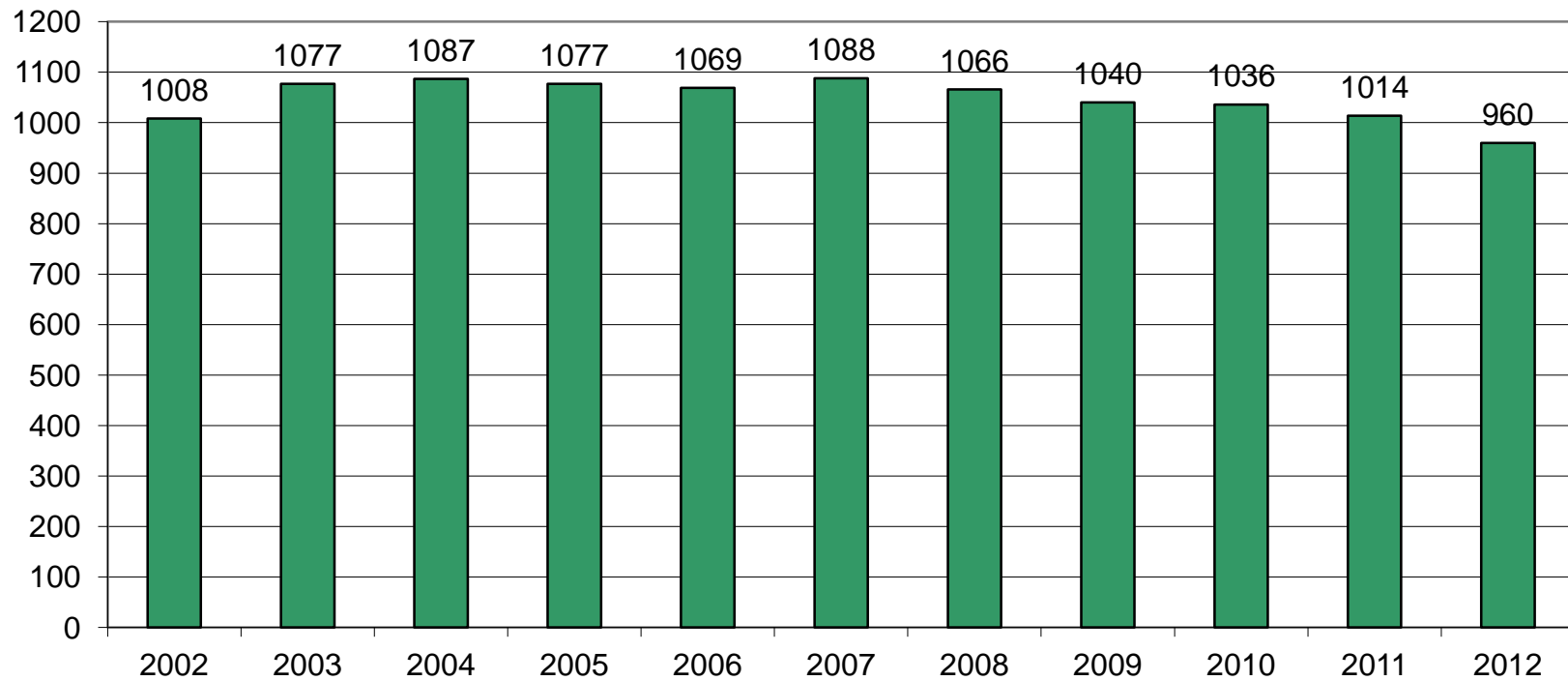
Historical Enrollment By Grade																			
Birth Year	Births	School Year	PK	K	1	2	3	4	5	6	7	8	9	10	11	12	UNGR	K-12	PK-12
1997	57	2002-03	0	0	83	92	90	87	81	87	101	99	68	80	76	64	0	1008	1008
1998	75	2003-04	0	0	108	85	93	97	91	83	91	107	96	65	84	77	0	1077	1077
1999	68	2004-05	0	0	85	107	90	95	101	86	83	87	101	98	67	87	0	1087	1087
2000	78	2005-06	0	0	88	91	104	95	97	97	81	83	88	93	91	69	0	1077	1077
2001	63	2006-07	0	0	79	88	88	104	92	96	99	80	76	78	94	95	0	1069	1069
2002	73	2007-08	0	55	72	75	86	91	102	91	89	102	79	77	78	91	0	1088	1088
2003	67	2008-09	0	63	89	67	76	88	91	100	94	90	84	71	76	77	0	1066	1066
2004	54	2009-10	27	32	74	87	69	79	83	91	97	85	80	81	74	81	0	1013	1040
2005	63	2010-11	31	62	50	75	88	71	83	75	94	96	76	83	82	70	0	1005	1036
2006	52	2011-12	32	32	77	52	78	92	70	82	77	90	85	79	87	81	0	982	1014
2007	45	2012-13	18	52	38	81	53	78	94	65	79	77	74	83	76	92	0	942	960

Historical Enrollment in Grade Combinations									
Year	K-4	K-5	K-6	K-8	5-8	6-8	7-8	7-12	9-12
2002-03	433	433	520	720	368	287	200	488	288
2003-04	474	474	557	755	372	281	198	520	322
2004-05	478	478	564	734	357	256	170	523	353
2005-06	475	475	572	736	358	261	164	505	341
2006-07	451	451	547	726	367	275	179	522	343
2007-08	481	481	572	763	384	282	191	516	325
2008-09	474	474	574	758	375	284	184	492	308
2009-10	451	424	515	697	356	273	182	498	316
2010-11	460	429	504	694	348	265	190	501	311
2011-12	433	401	483	650	319	249	167	499	332
2012-13	414	396	461	617	315	221	156	481	325

Historical Percentage Changes			
Year	K-12	Diff.	%
2002-03	1008	0	0.0%
2003-04	1077	69	6.8%
2004-05	1087	10	0.9%
2005-06	1077	-10	-0.9%
2006-07	1069	-8	-0.7%
2007-08	1088	19	1.8%
2008-09	1066	-22	-2.0%
2009-10	1013	-53	-5.0%
2010-11	1005	-8	-0.8%
2011-12	982	-23	-2.3%
2012-13	942	-40	-4.1%
Change		-66	-6.5%

Atkinson, NH, SAU#55 Historical Enrollment

PK-12, 2002-2012



Atkinson, NH, SAU#55 Projected Enrollment

School District: Atkinson, NH SAU#55

11/5/2012

Enrollment Projections By Grade*

Birth Year	Births		School Year	PK	K	1	2	3	4	5	6	7	8	9	10	11	12	UNGR	K-12	PK-12
2007	45		2012-13	18	52	38	81	53	78	94	65	79	77	74	83	76	92	0	942	960
2008	44		2013-14	19	37	69	39	83	54	79	89	65	78	67	75	84	76	0	895	914
2009	36		2014-15	20	31	49	71	40	85	55	75	89	64	68	68	76	84	0	855	875
2010	37	(prov)	2015-16	21	31	41	51	73	41	86	52	75	87	56	69	69	76	0	807	828
2011	25	(prov)	2016-17	22	21	41	42	52	75	41	82	52	74	75	57	70	69	0	751	773
2012	37.4	(est.)	2017-18	23	32	28	42	43	53	76	39	82	51	64	76	57	70	0	713	736
2013	35.88	(est.)	2018-19	24	30	43	29	43	44	54	72	39	81	44	65	77	57	0	678	702
2014	34.256	(est.)	2019-20	25	29	40	45	30	44	44	51	72	38	70	45	65	77	0	650	675
2015	33.9072	(est.)	2020-21	26	29	39	41	46	31	44	42	51	71	33	71	45	65	0	608	634
2016	33.28864	(est.)	2021-22	27	28	39	40	42	47	31	42	42	50	62	34	72	45	0	574	601
2017	34.94637	(est.)	2022-23	28	30	37	40	41	43	47	29	42	41	43	63	34	72	0	562	590

*Projections should be updated on an annual basis.

Based on an estimate of births

Based on children already born

Based on students already enrolled

Projected Enrollment in Grade Combinations*

Year	K-4	K-5	K-6	K-8	5-8	6-8	7-8	7-12	9-12
2012-13	414	396	461	617	315	221	156	481	325
2013-14	380	361	450	593	311	232	143	445	302
2014-15	351	331	406	559	283	228	153	449	296
2015-16	344	323	375	537	300	214	162	432	270
2016-17	294	272	354	480	249	208	126	397	271
2017-18	297	274	313	446	248	172	133	400	267
2018-19	267	243	315	435	246	192	120	363	243
2019-20	257	232	283	393	205	161	110	367	257
2020-21	256	230	272	394	208	164	122	336	214
2021-22	254	227	269	361	165	134	92	305	213
2022-23	266	238	267	350	159	112	83	295	212

Projected Percentage Changes

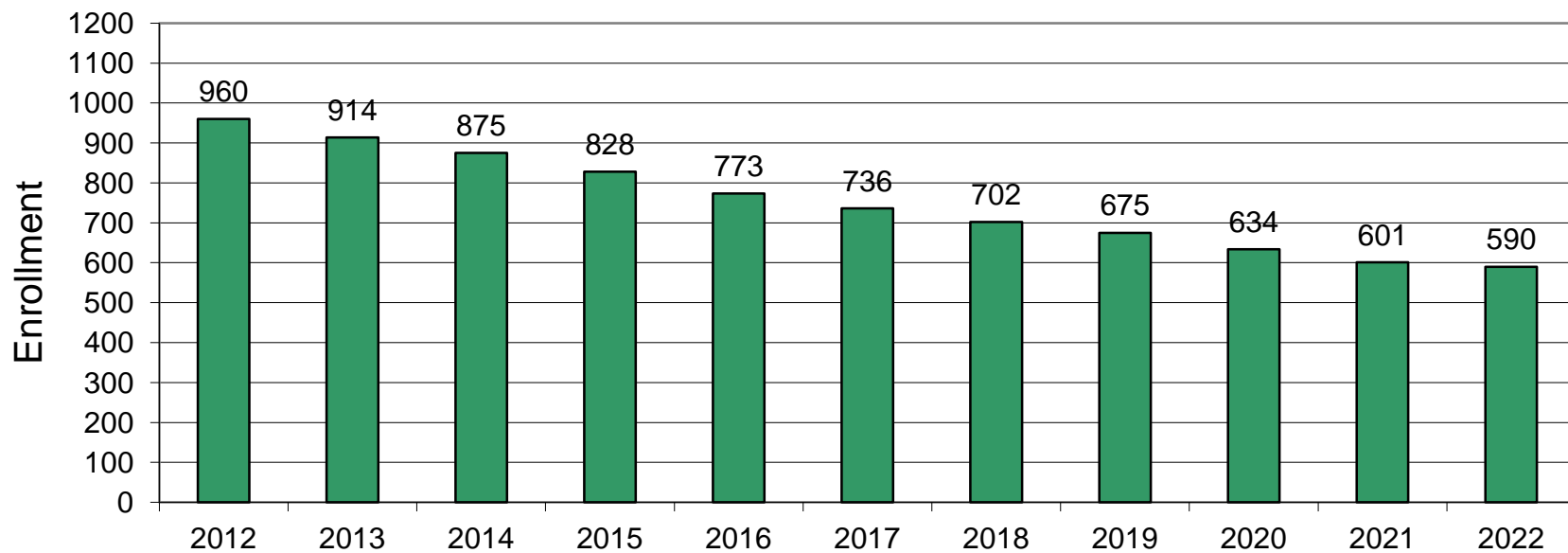
Years	K-12	Diff.	%
2012-13	942	0	0.0%
2013-14	895	-47	-5.0%
2014-15	855	-40	-4.5%
2015-16	807	-48	-5.6%
2016-17	751	-56	-6.9%
2017-18	713	-38	-5.1%
2018-19	678	-35	-4.9%
2019-20	650	-28	-4.1%
2020-21	608	-42	-6.5%
2021-22	574	-34	-5.6%
2022-23	562	-12	-2.1%
Change		-380	-40.3%

See "Reliability of Enrollment Projections" section of accompanying letter.

Projections are more reliable for Years 1-5 in the future than for Years 6 and beyond.

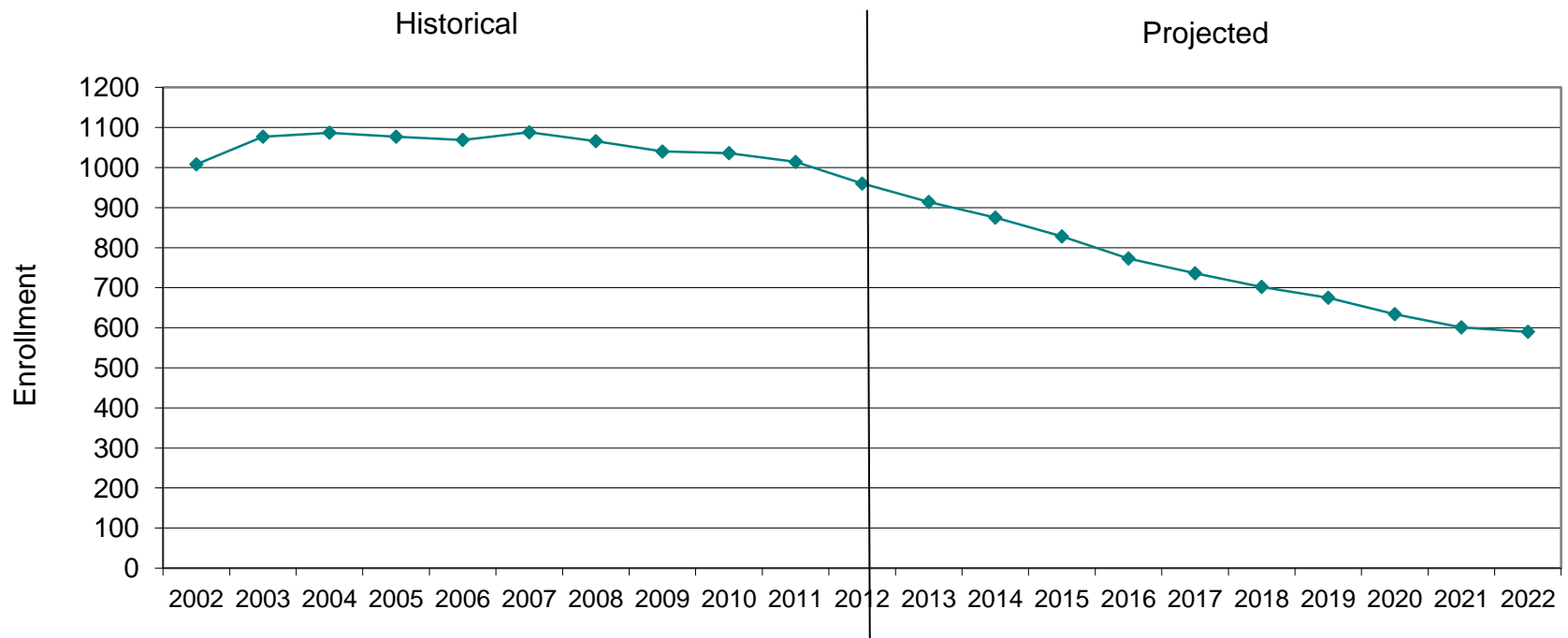
Atkinson, NH, SAU#55 Projected Enrollment

PK-12 TO 2022 Based On Data Through School Year 2012-13

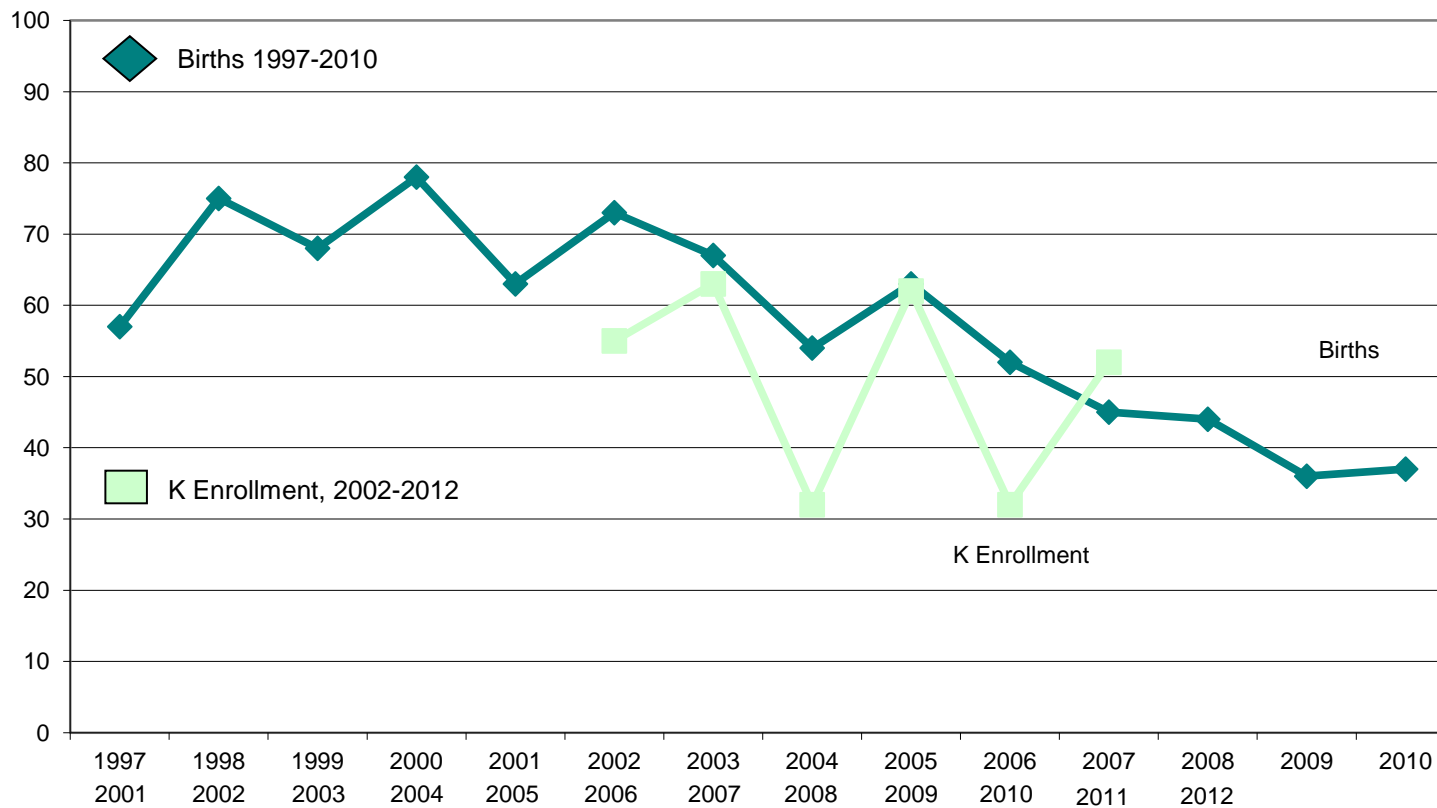


Atkinson, NH, SAU#55 Historical & Projected Enrollment

PK-12, 2002-2022



Atkinson, NH, SAU#55 Birth-to-Kindergarten Relationship



Atkinson, NH SAU#55 Additional Data

Building Permits Issued		
Year	Single-Family	Multi-Units
2000	42	45
2008	4	0
2009	7	0
2010	6	0
2011	9	0
2012	7 to 8/31	0

Source: HUD and Building Department

Enrollment History		
Year	Voc-Tech 9-12 Total	Non-Public K-12 Total
2001-02	n/a	n/a
2008-09	n/a	n/a
2009-10	n/a	n/a
2010-11	n/a	n/a
2011-12	n/a	2
2012-13	n/a	n/a

Residents in Non-Public Independent and Parochial Schools (Regular Education)														
Enrollments as of Oct. 1	K	1	2	3	4	5	6	7	8	9	10	11	12	K-12 TOTAL
	0	0	0	0	0	0	0	0	0	0	0	0	0	n/a

K-12 Home-Schooled Students	
2012	17

K-12 Residents "Choiced-out" or in Charter or Magnet Schools	
2012	5

K-12 SpEd Outplaced Students	
2012	4

K-12 Choiced-In, Tuitioned-In, & Other Non-Residents	
2012	0

The above data were used to assist in the preparation of the enrollment projections. If additional demographic work is needed, please contact our office.

Danville, NH SAU#55 Historical Enrollment

School District: Danville, NH, SAU#55

11/5/2012

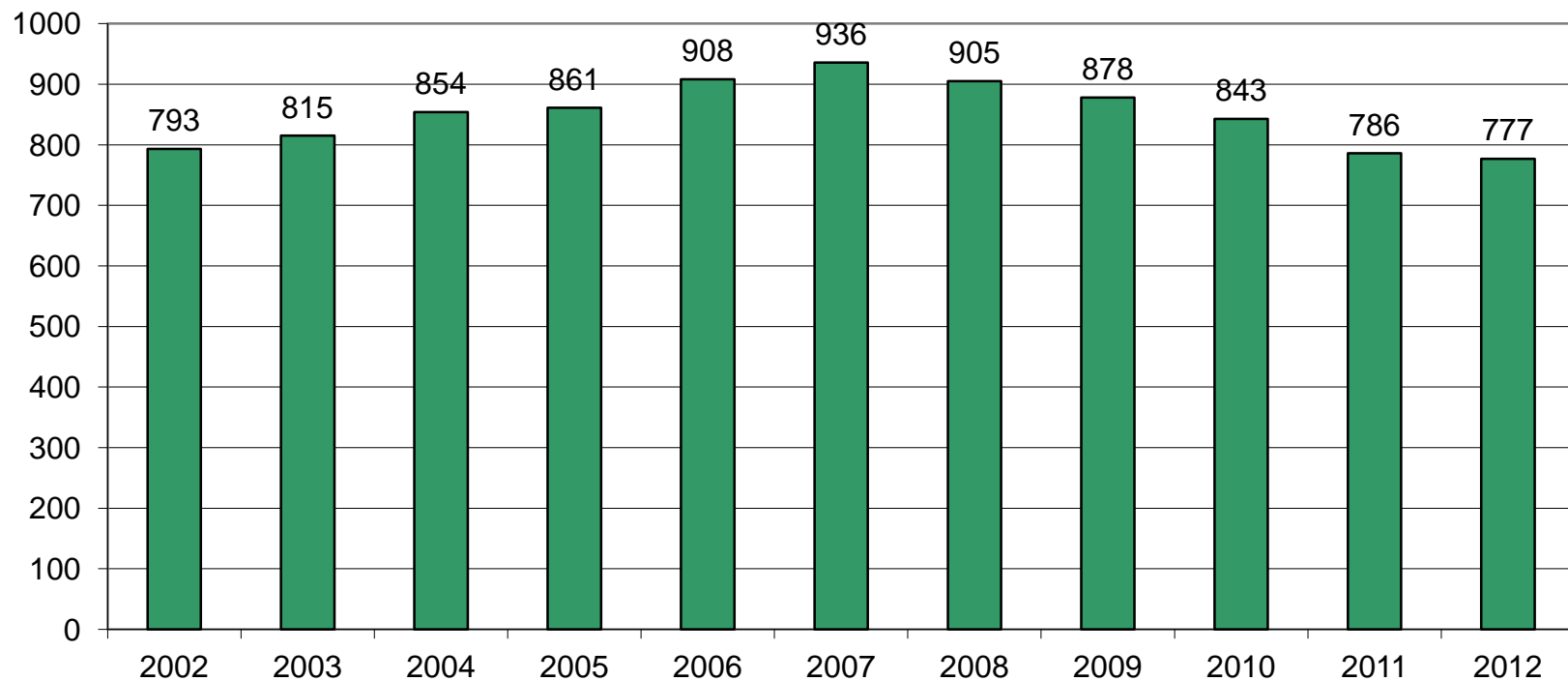
Historical Enrollment By Grade																			
Birth Year	Births	School Year	PK	K	1	2	3	4	5	6	7	8	9	10	11	12	UNGR	K-12	PK-12
1997	52	2002-03	0	0	73	55	71	79	63	86	71	54	73	71	54	43	34	827	793
1998	80	2003-04	0	0	64	70	52	67	81	69	90	78	52	74	67	51	31	846	815
1999	63	2004-05	0	0	75	69	73	55	71	86	73	88	78	52	72	62	50	904	854
2000	48	2005-06	0	0	68	73	69	72	56	72	95	70	87	77	51	71	55	916	861
2001	63	2006-07	0	0	87	65	75	74	73	60	71	98	71	91	83	60	0	908	908
2002	44	2007-08	0	46	63	86	65	74	75	73	61	69	92	68	84	80	0	936	936
2003	63	2008-09	0	56	54	62	85	65	71	70	70	62	66	92	68	84	0	905	905
2004	43	2009-10	0	51	61	56	67	86	64	71	67	71	60	63	88	73	0	878	878
2005	35	2010-11	0	22	62	58	55	64	84	67	67	69	71	62	65	97	0	843	843
2006	38	2011-12	0	45	23	62	53	56	63	80	67	67	68	71	64	67	0	786	786
2007	40	2012-13	13	46	54	26	59	54	54	62	79	65	66	67	69	63	0	764	777

Historical Enrollment in Grade Combinations									
Year	K-4	K-5	K-6	K-8	5-8	6-8	7-8	7-12	9-12
2002-03	278	278	341	498	299	220	157	409	252
2003-04	253	253	334	493	307	240	159	430	271
2004-05	272	272	343	502	285	230	159	449	290
2005-06	282	282	338	505	295	223	167	452	285
2006-07	301	301	374	505	278	204	131	474	343
2007-08	334	334	409	543	283	209	134	447	313
2008-09	322	322	393	533	276	211	140	428	288
2009-10	321	321	385	523	288	202	138	420	282
2010-11	261	261	345	479	282	218	134	401	267
2011-12	239	239	302	449	266	210	147	417	270
2012-13	252	252	306	447	249	195	141	408	267

Historical Percentage Changes			
Year	K-12	Diff.	%
2002-03	827	0	0.0%
2003-04	846	19	2.3%
2004-05	904	58	6.9%
2005-06	916	12	1.3%
2006-07	908	-8	-0.9%
2007-08	936	28	3.1%
2008-09	905	-31	-3.3%
2009-10	878	-27	-3.0%
2010-11	843	-35	-4.0%
2011-12	786	-57	-6.8%
2012-13	764	-22	-2.8%
Change		-63	-7.6%

Danville, NH SAU#55 Historical Enrollment

PK-12, 2002-2012



Danville, NH SAU#55 Projected Enrollment

School District: Danville, NH, SAU#55

11/5/2012

Enrollment Projections By Grade*																				
Birth Year	Births		School Year	PK	K	1	2	3	4	5	6	7	8	9	10	11	12	UNGR	K-12	PK-12
2007	40		2012-13	13	46	54	26	59	54	54	62	79	65	66	67	69	63	0	764	777
2008	34		2013-14	15	35	53	55	25	59	53	54	61	79	64	66	68	72	0	744	759
2009	35		2014-15	17	36	40	54	53	25	58	53	53	61	78	64	67	71	0	713	730
2010	29	(prov)	2015-16	19	30	42	41	52	53	24	58	52	53	60	78	65	70	0	678	697
2011	35	(est.)	2016-17	21	37	35	43	39	52	52	24	57	52	52	60	79	68	0	650	671
2012	35	(est.)	2017-18	23	36	43	36	41	39	51	52	23	57	51	52	61	82	0	624	647
2013	34	(est.)	2018-19	25	35	42	44	35	41	38	51	51	23	56	51	53	63	0	583	608
2014	33	(est.)	2019-20	27	35	40	43	42	35	40	38	50	51	23	56	52	55	0	560	587
2015	33	(est.)	2020-21	29	35	40	41	41	42	34	40	37	50	51	23	57	54	0	545	574
2016	34	(est.)	2021-22	31	35	40	41	39	41	41	34	39	37	50	51	23	59	0	530	561
2017	34	(est.)	2022-23	33	35	40	41	39	39	40	41	33	39	37	50	52	24	0	510	543

*Projections should be updated on an annual basis.

Based on an estimate of births

Based on children already born

Based on students already enrolled

Projected Enrollment in Grade Combinations*									
Year	K-4	K-5	K-6	K-8	5-8	6-8	7-8	7-12	9-12
2012-13	306	293	355	499	260	206	144	409	265
2013-14	295	280	334	474	247	194	140	410	270
2014-15	283	266	319	433	225	167	114	394	280
2015-16	261	242	300	405	187	163	105	378	273
2016-17	279	258	282	391	185	133	109	368	259
2017-18	269	246	298	378	183	132	80	326	246
2018-19	260	235	286	360	163	125	74	297	223
2019-20	262	235	273	374	179	139	101	287	186
2020-21	262	233	273	360	161	127	87	272	185
2021-22	268	237	271	347	151	110	76	259	183
2022-23	267	234	275	347	153	113	72	235	163

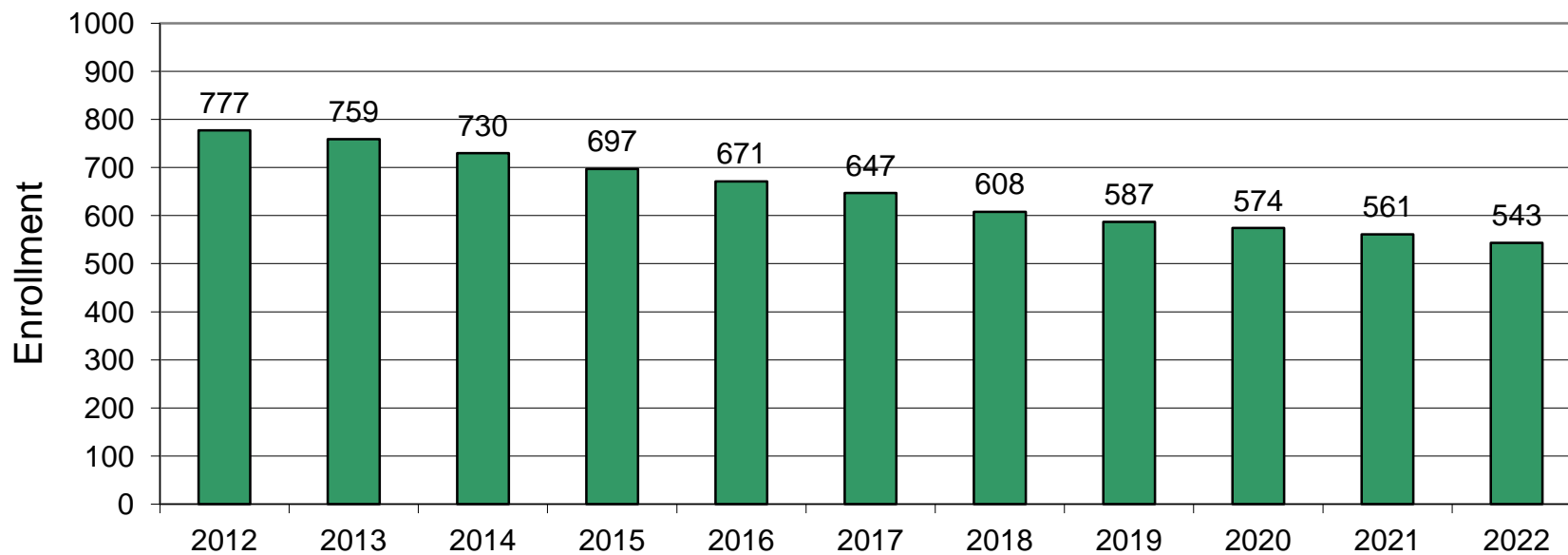
Projected Percentage Changes			
Years	K-12	Diff.	%
2012-13	764	0	0.0%
2013-14	744	-20	-2.6%
2014-15	713	-31	-4.2%
2015-16	678	-35	-4.9%
2016-17	650	-28	-4.1%
2017-18	624	-26	-4.0%
2018-19	583	-41	-6.6%
2019-20	560	-23	-3.9%
2020-21	545	-15	-2.7%
2021-22	530	-15	-2.8%
2022-23	510	-20	-3.8%
Change		-254	-33.2%

See "Reliability of Enrollment Projections" section of accompanying letter.

Projections are more reliable for Years 1-5 in the future than for Years 6 and beyond.

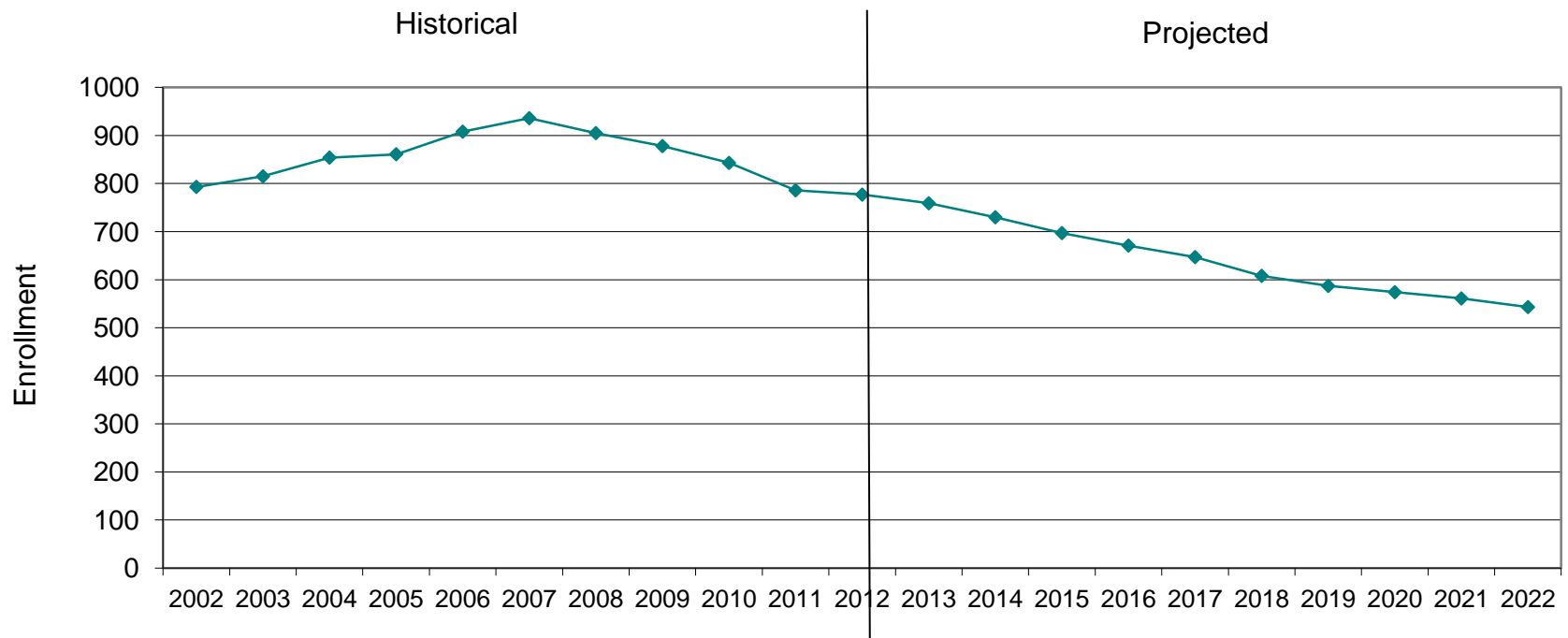
Danville, NH SAU#55 Projected Enrollment

PK-12 TO 2022 Based On Data Through School Year 2012-13

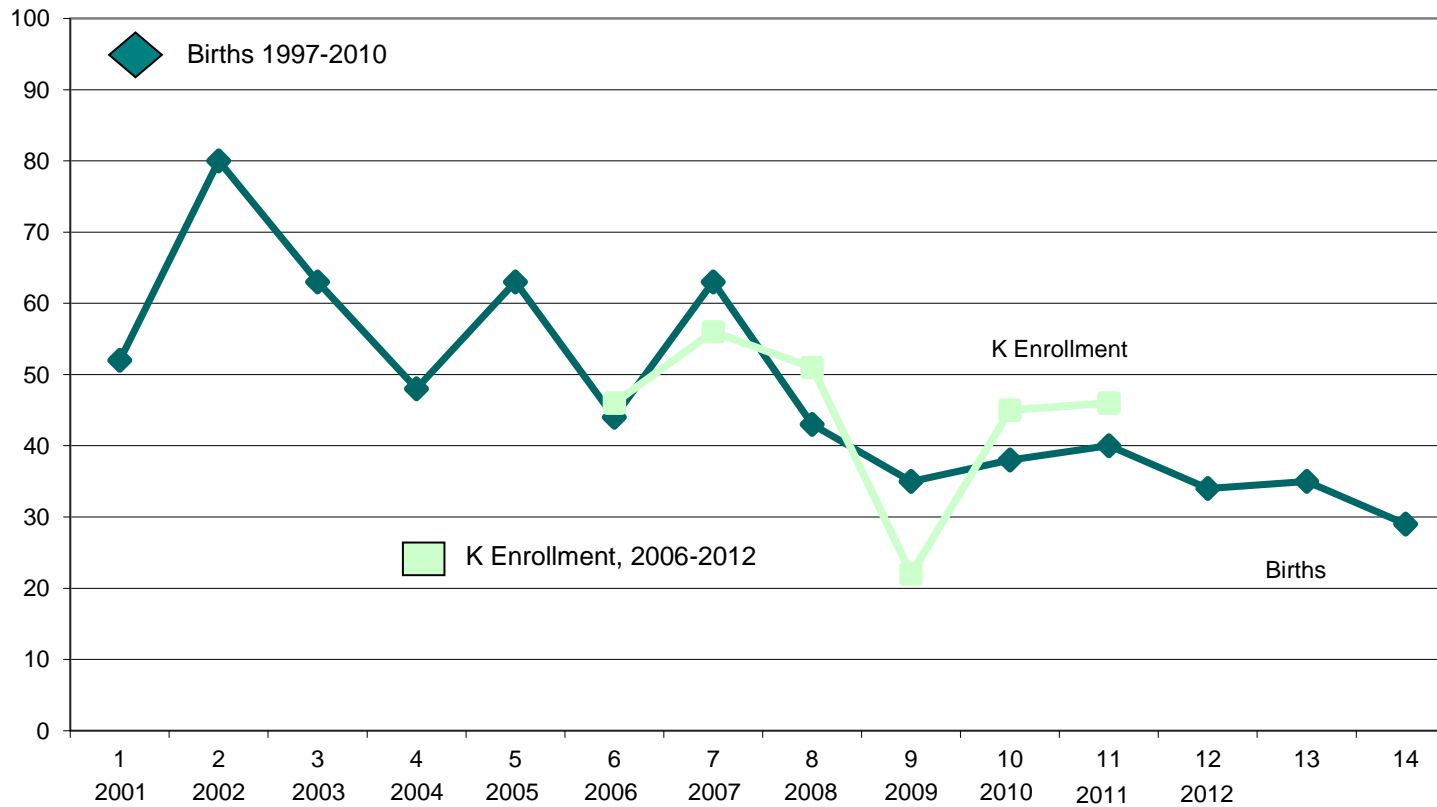


Danville, NH SAU#55 Historical & Projected Enrollment

PK-12, 2002-2022



Danville, NH SAU#55 Birth-to-Kindergarten Relationship



Danville, NH SAU#55 Additional Data

Building Permits Issued		
Year	Single-Family	Multi-Units
2000	23	0
2008	0	0
2009	3	4
2010	12	
2011	7	12
2012	2 to 9/30	3 to 9/30

Source: HUD and Building Department

Enrollment History		
Year	Voc-Tech 9-12 Total	Non-Public K-12 Total
2001-02	n/a	n/a
2008-09	n/a	n/a
2009-10	n/a	n/a
2010-11	n/a	n/a
2011-12	n/a	n/a
2012-13	n/a	n/a

Residents in Non-Public Independent and Parochial Schools (Regular Education)														
Enrollments as of Oct. 1	K	1	2	3	4	5	6	7	8	9	10	11	12	K-12 TOTAL
	0	0	0	0	0	0	0	0	0	0	0	0	0	n/a

K-12 Home-Schooled Students	
2012	18

K-12 Residents "Choiced-out" or in Charter or Magnet Schools	
2012	2

K-12 SpEd Outplaced Students	
2012	4

K-12 Choiced-In, Tuitioned-In, & Other Non-Residents	
2012	1

The above data were used to assist in the preparation of the enrollment projections. If additional demographic work is needed, please contact our office.

Plaistow, NH SAU#55 Historical Enrollment

School District: Plaistow, NH SAU#55

11/5/2012

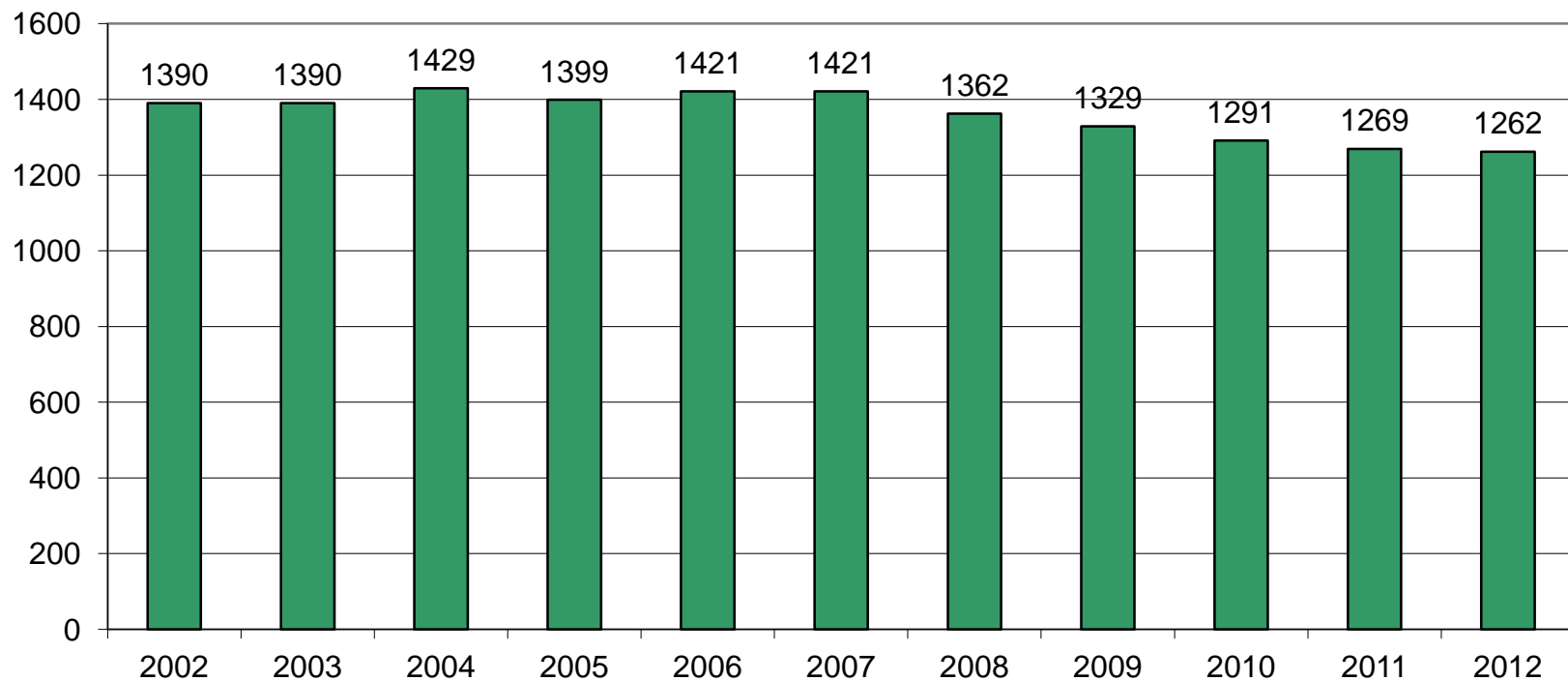
Historical Enrollment By Grade																			
Birth Year	Births	School Year	PK	K	1	2	3	4	5	6	7	8	9	10	11	12	UNGR	K-12	PK-12
1997	120	2002-03	66	0	104	113	117	99	124	111	129	123	104	117	96	87	0	1324	1390
1998	96	2003-04	53	0	118	106	115	115	94	121	114	130	121	102	112	89	0	1337	1390
1999	91	2004-05	25	0	121	125	112	118	117	93	128	120	136	117	102	115	0	1404	1429
2000	91	2005-06	31	0	96	117	114	105	119	116	104	129	119	133	115	101	0	1368	1399
2001	89	2006-07	75	0	88	92	119	109	102	117	118	105	120	119	130	127	0	1346	1421
2002	96	2007-08	53	69	73	96	94	106	114	97	121	121	108	114	120	135	0	1368	1421
2003	81	2008-09	47	72	79	67	87	91	104	114	100	122	125	114	115	125	0	1315	1362
2004	88	2009-10	47	75	89	78	68	85	92	113	120	104	118	120	106	114	0	1282	1329
2005	77	2010-11	45	69	84	89	77	71	89	89	112	121	98	121	120	106	0	1246	1291
2006	77	2011-12	63	68	73	87	91	78	75	91	88	109	116	95	115	120	0	1206	1269
2007	86	2012-13	65	82	76	73	89	87	80	73	93	95	113	119	94	123	0	1197	1262

Historical Enrollment in Grade Combinations									
Year	K-4	K-5	K-6	K-8	5-8	6-8	7-8	7-12	9-12
2002-03	623	557	668	920	487	363	252	656	404
2003-04	601	548	669	913	459	365	244	668	424
2004-05	618	593	686	934	458	341	248	718	470
2005-06	582	551	667	900	468	349	233	701	468
2006-07	585	510	627	850	442	340	223	719	496
2007-08	605	552	649	891	453	339	242	719	477
2008-09	547	500	614	836	440	336	222	701	479
2009-10	534	487	600	824	429	337	224	682	458
2010-11	524	479	568	801	411	322	233	678	445
2011-12	535	472	563	760	363	288	197	643	446
2012-13	552	487	560	748	341	261	188	637	449

Historical Percentage Changes			
Year	K-12	Diff.	%
2002-03	1324	0	0.0%
2003-04	1337	13	1.0%
2004-05	1404	67	5.0%
2005-06	1368	-36	-2.6%
2006-07	1346	-22	-1.6%
2007-08	1368	22	1.6%
2008-09	1315	-53	-3.9%
2009-10	1282	-33	-2.5%
2010-11	1246	-36	-2.8%
2011-12	1206	-40	-3.2%
2012-13	1197	-9	-0.7%
Change		-127	-9.6%

Plaistow, NH SAU#55 Historical Enrollment

PK-12, 2002-2012



Plaistow, NH SAU#55 Projected Enrollment

School District: Plaistow, NH SAU#55

11/5/2012

Enrollment Projections By Grade*																				
Birth Year	Births		School Year	PK	K	1	2	3	4	5	6	7	8	9	10	11	12	UNGR	K-12	PK-12
2007	86	0	2012-13	65	82	76	73	89	87	80	73	93	95	113	119	94	123	0	1197	1262
2008	64	0	2013-14	66	58	91	77	74	89	91	79	73	95	93	112	116	96	0	1144	1210
2009	68	0	2014-15	67	62	64	92	78	74	93	90	79	74	93	93	109	119	0	1120	1187
2010	74	(est.)	2015-16	68	68	69	65	93	78	77	92	90	81	72	93	91	112	0	1081	1149
2011	74	(est.)	2016-17	69	67	75	70	66	93	81	76	92	92	79	72	91	93	0	1047	1116
2012	73	(est.)	2017-18	70	67	74	76	71	66	97	80	76	94	90	79	70	93	0	1033	1103
2013	71	(est.)	2018-19	71	64	74	75	77	71	69	96	80	78	92	90	77	72	0	1015	1086
2014	72	(est.)	2019-20	72	66	71	75	76	77	74	68	96	82	76	92	88	79	0	1020	1092
2015	73	(est.)	2020-21	73	66	73	72	76	76	80	73	68	98	80	76	90	90	0	1018	1091
2016	73	(est.)	2021-22	74	66	73	74	73	76	79	79	73	69	96	80	74	92	0	1004	1078
2017	72	(est.)	2022-23	75	66	73	74	75	73	79	78	79	74	68	96	78	76	0	989	1064

*Projections should be updated on an annual basis.

Based on an estimate of births

Based on children already born

Based on students already enrolled

Projected Enrollment in Grade Combinations*									
Year	K-4	K-5	K-6	K-8	5-8	6-8	7-8	7-12	9-12
2012-13	552	487	560	748	341	261	188	637	449
2013-14	546	480	559	727	338	247	168	585	417
2014-15	530	463	553	706	336	243	153	567	414
2015-16	518	450	542	713	340	263	171	539	368
2016-17	521	452	528	712	341	260	184	519	335
2017-18	521	451	531	701	347	250	170	502	332
2018-19	501	430	526	684	323	254	158	489	331
2019-20	511	439	507	685	320	246	178	513	335
2020-21	516	443	516	682	319	239	166	502	336
2021-22	515	441	520	662	300	221	142	484	342
2022-23	515	440	518	671	310	231	153	471	318

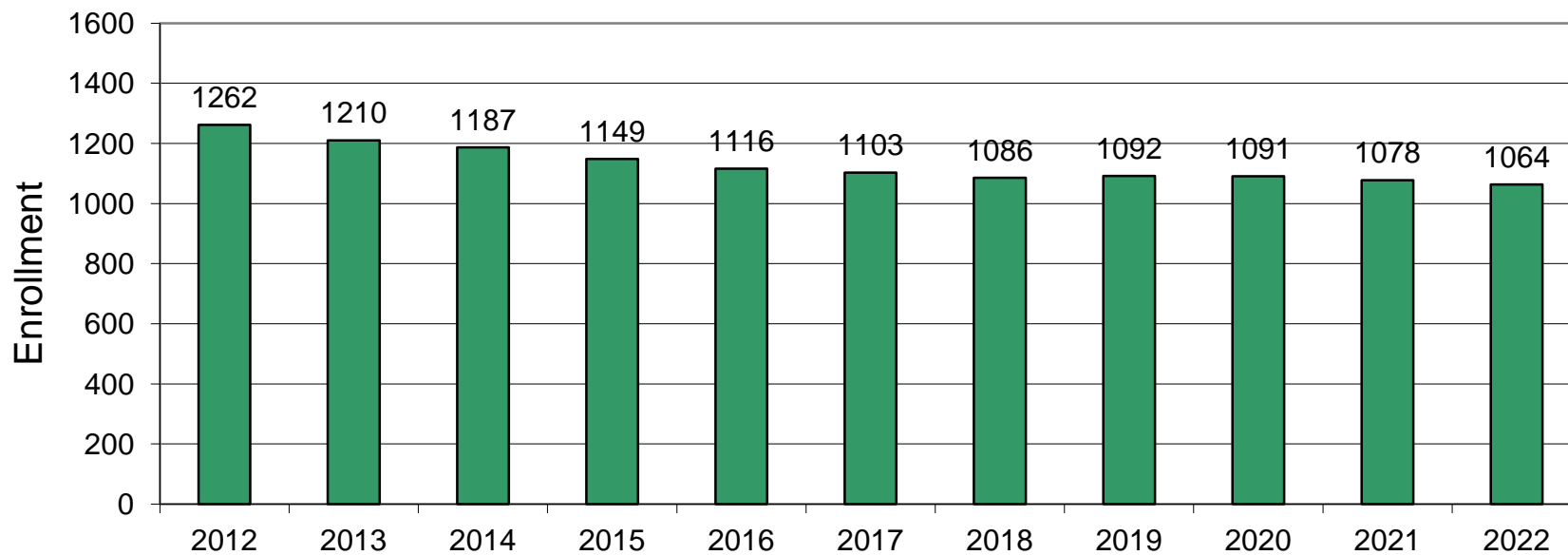
Projected Percentage Changes			
Years	K-12	Diff.	%
2012-13	1197	0	0.0%
2013-14	1144	-53	-4.4%
2014-15	1120	-24	-2.1%
2015-16	1081	-39	-3.5%
2016-17	1047	-34	-3.1%
2017-18	1033	-14	-1.3%
2018-19	1015	-18	-1.7%
2019-20	1020	5	0.5%
2020-21	1018	-2	-0.2%
2021-22	1004	-14	-1.4%
2022-23	989	-15	-1.5%
Change		-208	-17.4%

See "Reliability of Enrollment Projections" section of accompanying letter.

Projections are more reliable for Years 1-5 in the future than for Years 6 and beyond.

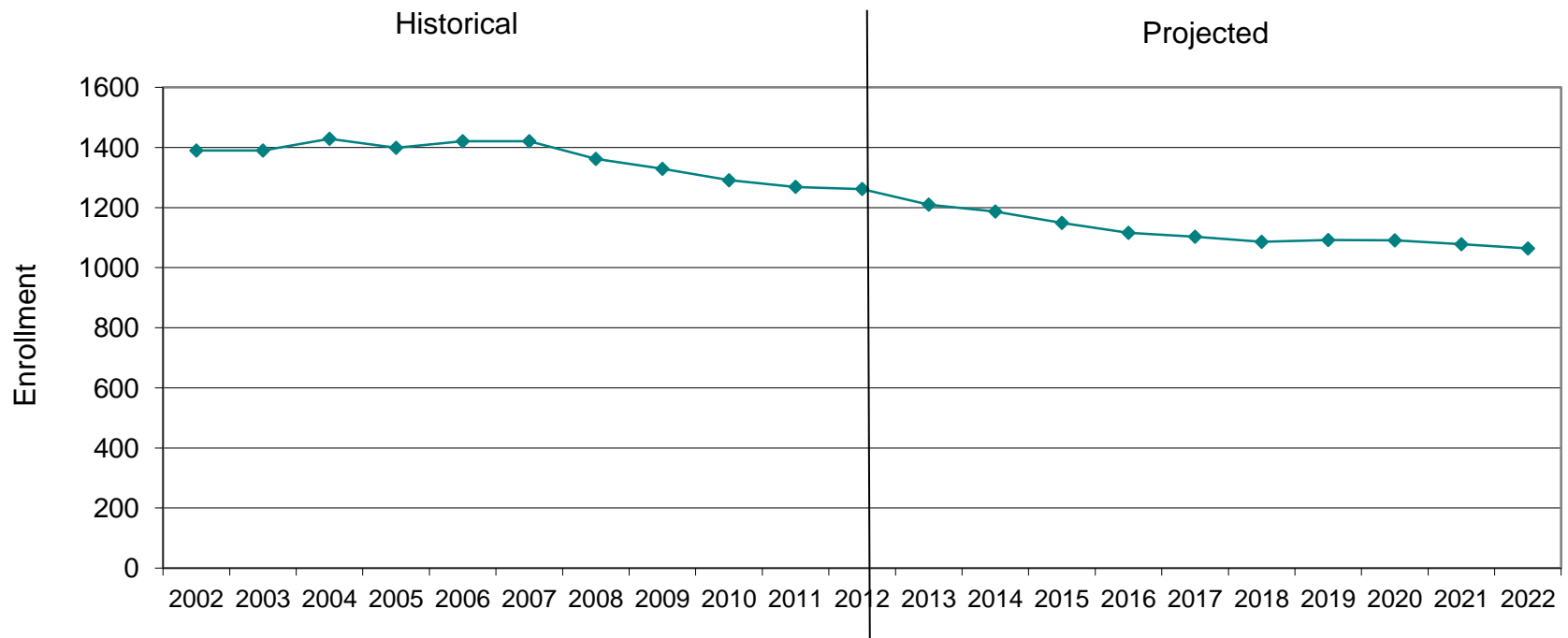
Plaistow, NH SAU#55 Projected Enrollment

PK-12 TO 2022 Based On Data Through School Year 2012-13

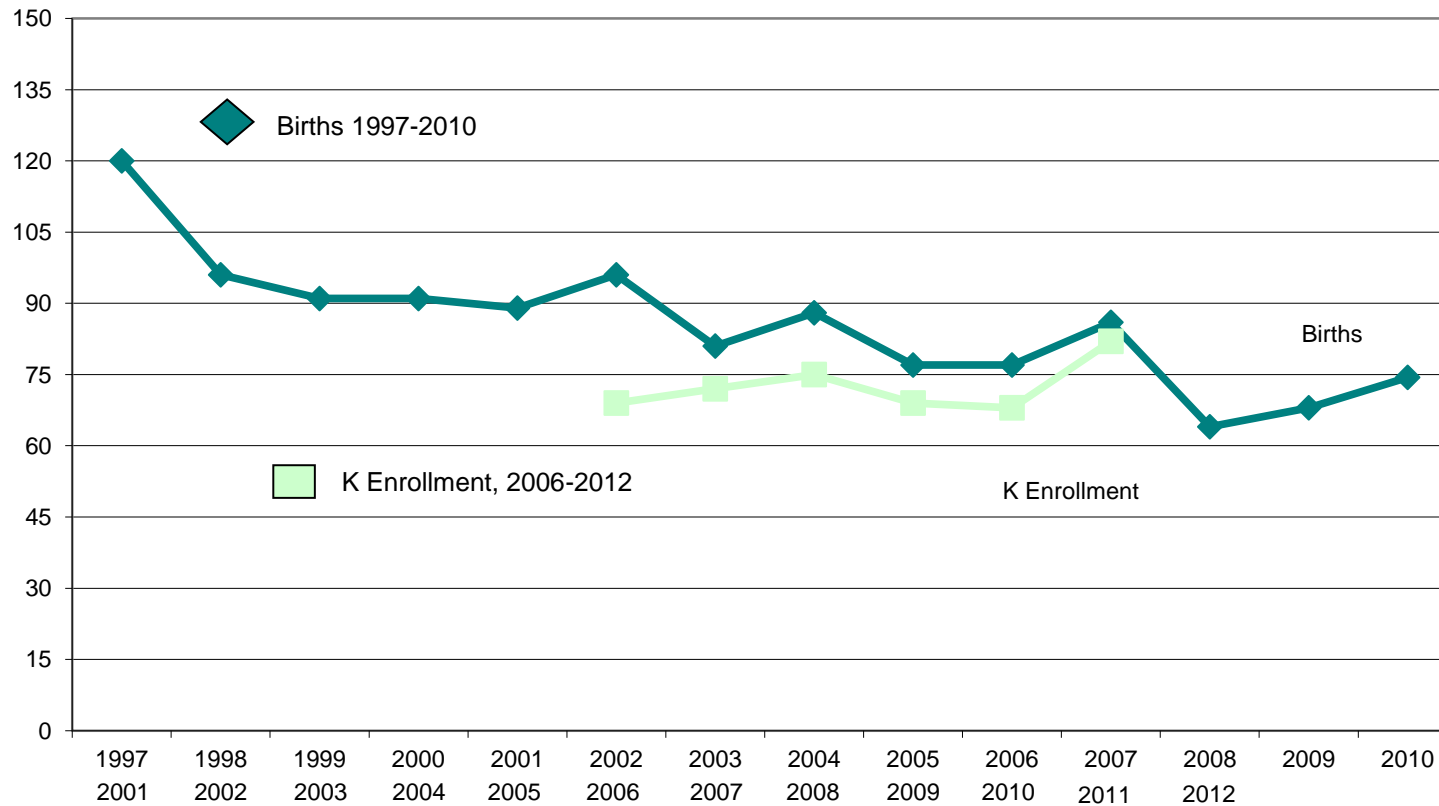


Plaistow, NH SAU#55 Historical & Projected Enrollment

PK-12, 2002-2022



Plaistow, NH SAU#55 Birth-to-Kindergarten Relationship



Plaistow, NH SAU#55 Additional Data

Building Permits Issued		
Year	Single-Family	Multi-Units
2000	15	0
2008	0	0
2009	0	0
2010	0	0
2011	1	0
2012	4 to 9/30	0

Source: HUD and Building Department

Enrollment History		
Year	Voc-Tech 9-12 Total	Non-Public K-12 Total
2001-02	n/a	n/a
2008-09	n/a	n/a
2009-10	n/a	n/a
2010-11	n/a	n/a
2011-12	n/a	n/a
2012-13	n/a	n/a

Residents in Non-Public Independent and Parochial Schools (Regular Education)														
Enrollments as of Oct. 1	K	1	2	3	4	5	6	7	8	9	10	11	12	K-12 TOTAL
	0	0	0	0	0	0	0	0	0	0	0	0	0	n/a

K-12 Home-Schooled Students	
2012	33

K-12 Residents "Choiced-out" or in Charter or Magnet Schools	
2012	1

K-12 SpEd Outplaced Students	
2012	3

K-12 Choiced-In, Tuitioned-In, & Other Non-Residents	
2012	12

The above data were used to assist in the preparation of the enrollment projections. If additional demographic work is needed, please contact our office.

Sandown, NH SAU#55 Historical Enrollment

School District: Sandown NH

11/5/2012

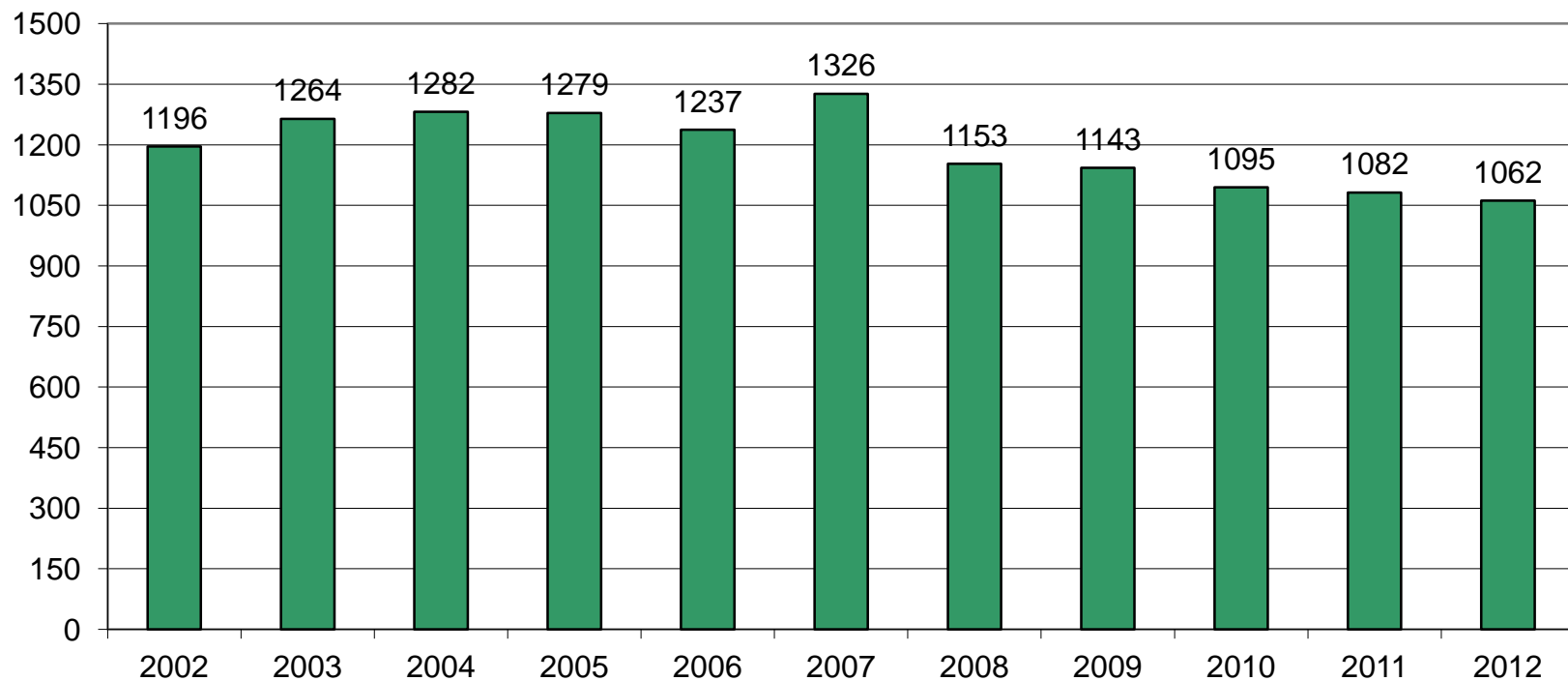
Historical Enrollment By Grade																			
Birth Year	Births	School Year	PK	K	1	2	3	4	5	6	7	8	9	10	11	12	UNGR	K-12	PK-12
1997	85	2002-03	0	82	94	75	93	105	98	113	96	94	101	97	74	74	0	1196	1196
1998	74	2003-04	0	85	84	102	78	91	110	100	121	96	97	104	98	98	0	1264	1264
1999	63	2004-05	0	84	81	89	105	78	102	112	98	124	98	101	105	105	0	1282	1282
2000	84	2005-06	0	88	84	83	88	104	83	97	114	103	124	99	106	106	0	1279	1279
2001	65	2006-07	0	67	87	79	82	89	100	81	95	110	112	123	106	106	0	1237	1237
2002	72	2007-08	58	83	77	89	83	84	96	102	89	100	113	104	124	124	0	1268	1326
2003	67	2008-09	0	67	80	83	76	85	79	87	96	97	90	95	108	110	0	1153	1153
2004	65	2009-10	0	57	76	89	85	76	91	76	87	95	105	88	104	114	0	1143	1143
2005	79	2010-11	0	65	69	74	81	84	80	96	75	85	96	103	86	101	0	1095	1095
2006	73	2011-12	0	64	73	73	70	84	87	87	102	78	84	90	102	88	0	1082	1082
2007	72	2012-13	0	58	73	72	72	71	84	90	83	97	76	85	93	108	0	1062	1062

Historical Enrollment in Grade Combinations									
Year	K-4	K-5	K-6	K-8	5-8	6-8	7-8	7-12	9-12
2002-03	547	547	660	850	401	303	190	536	346
2003-04	550	550	650	867	427	317	217	614	397
2004-05	539	539	651	873	436	334	222	631	409
2005-06	530	530	627	844	397	314	217	652	435
2006-07	504	504	585	790	386	286	205	652	447
2007-08	570	512	614	803	387	291	189	654	465
2008-09	470	470	557	750	359	280	193	596	403
2009-10	474	474	550	732	349	258	182	593	411
2010-11	453	453	549	709	336	256	160	546	386
2011-12	451	451	538	718	354	267	180	544	364
2012-13	430	430	520	700	354	270	180	542	362

Historical Percentage Changes			
Year	K-12	Diff.	%
2002-03	1196	0	0.0%
2003-04	1264	68	5.7%
2004-05	1282	18	1.4%
2005-06	1279	-3	-0.2%
2006-07	1237	-42	-3.3%
2007-08	1268	31	2.5%
2008-09	1153	-115	-9.1%
2009-10	1143	-10	-0.9%
2010-11	1095	-48	-4.2%
2011-12	1082	-13	-1.2%
2012-13	1062	-20	-1.8%
Change		-134	-11.2%

Sandown, NH SAU#55 Historical Enrollment

PK-12, 2002-2012



Sandown, NH SAU#55 Projected Enrollment

School District: Sandown NH

11/5/2012

Enrollment Projections By Grade*																				
Birth Year	Births		School Year	PK	K	1	2	3	4	5	6	7	8	9	10	11	12	UNGR	K-12	PK-12
2007	72	0	2012-13	0	58	73	72	72	71	84	90	83	97	76	85	93	108	0	1062	1062
2008	58	0	2013-14	0	48	67	73	68	73	73	88	90	82	96	74	87	95	0	1014	1014
2009	41	0	2014-15	0	34	56	67	69	69	75	77	88	89	81	94	76	89	0	964	964
2010	65	(est.)	2015-16	0	54	39	56	63	70	71	79	77	87	88	79	96	77	0	936	936
2011	62	(est.)	2016-17	0	52	63	39	53	64	72	75	79	76	86	86	81	98	0	924	924
2012	59	(est.)	2017-18	0	50	60	63	37	54	66	76	75	78	75	84	88	82	0	888	888
2013	57	(est.)	2018-19	0	48	58	60	60	37	56	69	76	74	77	73	86	90	0	864	864
2014	57	(est.)	2019-20	0	47	56	58	57	61	38	59	69	75	73	75	75	88	0	831	831
2015	60	(est.)	2020-21	0	50	54	56	55	58	63	40	59	68	74	71	77	76	0	801	801
2016	59	(est.)	2021-22	0	49	58	54	53	56	60	66	40	58	67	72	73	78	0	784	784
2017	58	(est.)	2022-23	0	49	57	58	51	54	58	63	66	40	57	65	74	74	0	766	766

*Projections should be updated on an annual basis.

Based on an estimate of births

Based on children already born

Based on students already enrolled

Projected Enrollment in Grade Combinations*									
Year	K-4	K-5	K-6	K-8	5-8	6-8	7-8	7-12	9-12
2012-13	430	430	520	700	354	270	180	542	362
2013-14	402	402	490	662	333	260	172	524	352
2014-15	370	370	447	624	329	254	177	517	340
2015-16	353	353	432	596	314	243	164	504	340
2016-17	343	343	418	573	302	230	155	506	351
2017-18	330	330	406	559	295	229	153	482	329
2018-19	319	319	388	538	275	219	150	476	326
2019-20	317	317	376	520	241	203	144	455	311
2020-21	336	336	376	503	230	167	127	425	298
2021-22	330	330	396	494	224	164	98	388	290
2022-23	327	327	390	496	227	169	106	376	270

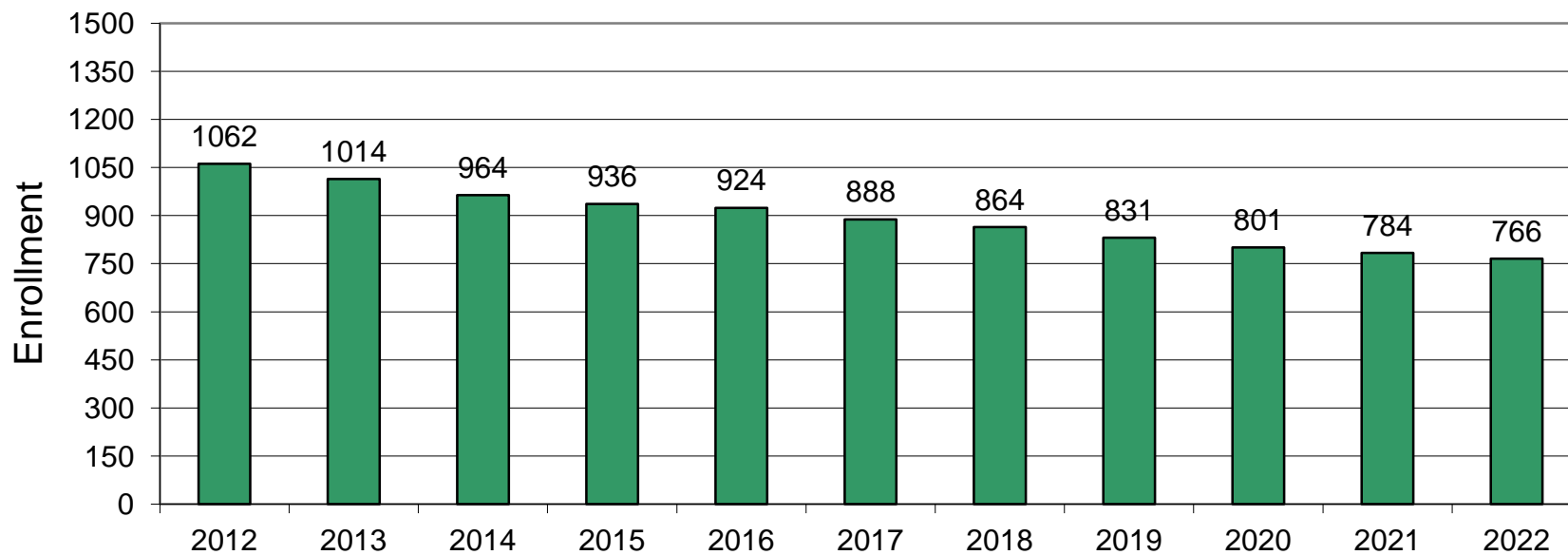
Projected Percentage Changes			
Years	K-12	Diff.	%
2012-13	1062	0	0.0%
2013-14	1014	-48	-4.5%
2014-15	964	-50	-4.9%
2015-16	936	-28	-2.9%
2016-17	924	-12	-1.3%
2017-18	888	-36	-3.9%
2018-19	864	-24	-2.7%
2019-20	831	-33	-3.8%
2020-21	801	-30	-3.6%
2021-22	784	-17	-2.1%
2022-23	766	-18	-2.3%
Change		-296	-27.9%

See "Reliability of Enrollment Projections" section of accompanying letter.

Projections are more reliable for Years 1-5 in the future than for Years 6 and beyond.

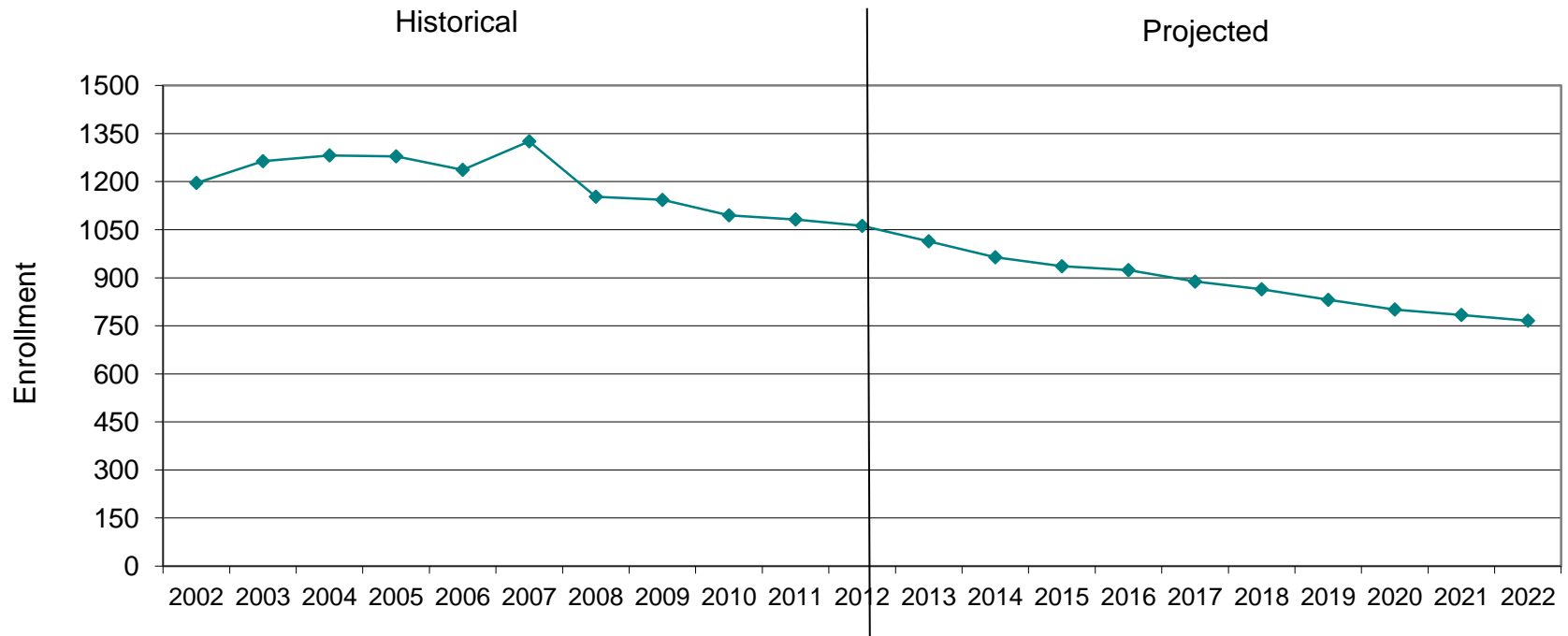
Sandown, NH SAU#55 Projected Enrollment

PK-12 TO 2022 Based On Data Through School Year 2012-13

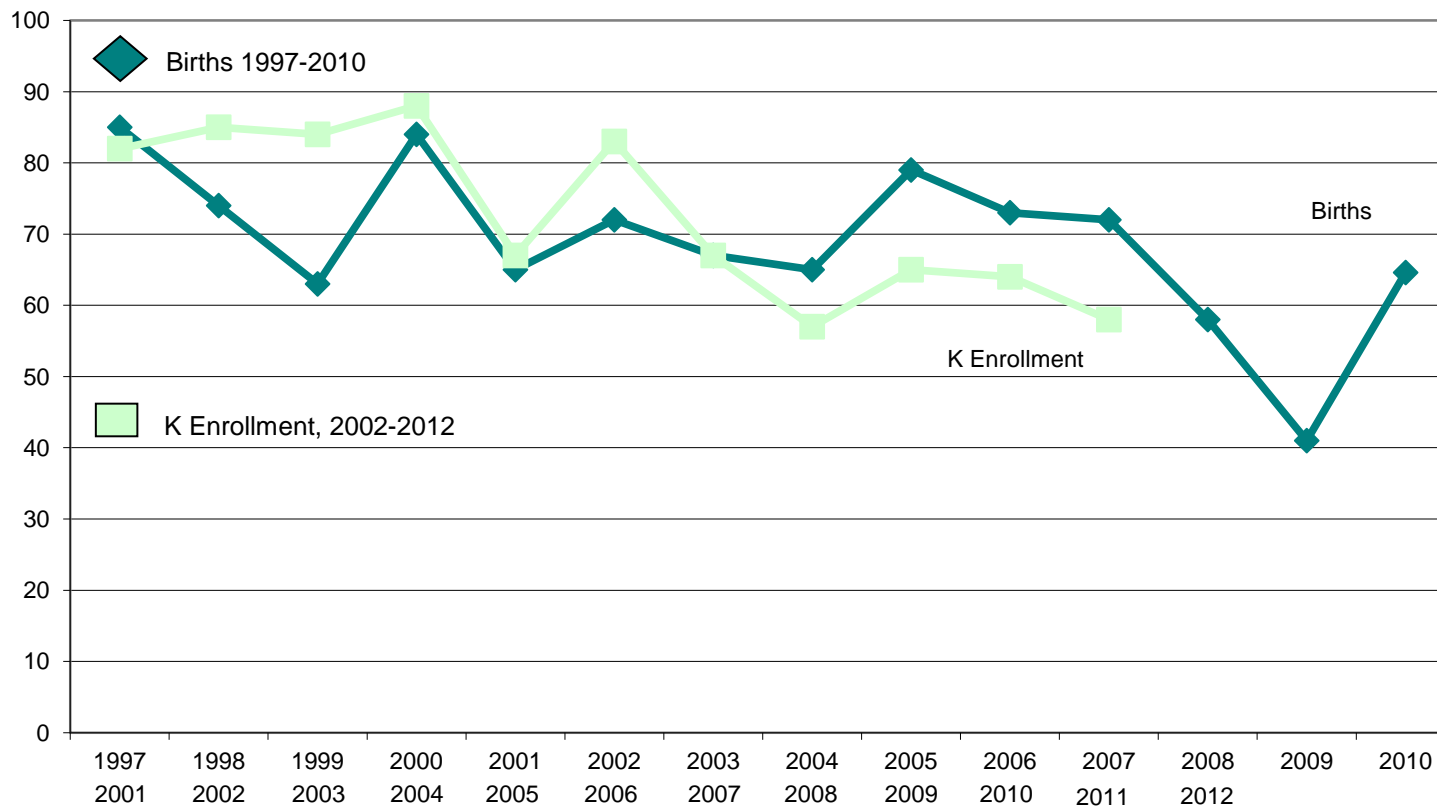


Sandown, NH SAU#55 Historical & Projected Enrollment

PK-12, 2002-2022



Sandown, NH SAU#55 Birth-to-Kindergarten Relationship



Sandown, NH SAU#55 Additional Data

Building Permits Issued		
Year	Single-Family	Multi-Units
2000	17	0
2008	9	0
2009	19	0
2010	29	0
2011	20	0
2012	13 to 9/30	0

Source: HUD and Building Department

Enrollment History		
Year	Voc-Tech 9-12 Total	Non-Public K-12 Total
2001-02	n/a	n/a
2008-09	n/a	n/a
2009-10	n/a	n/a
2010-11	n/a	n/a
2011-12	n/a	n/a
2012-13	n/a	n/a

Residents in Non-Public Independent and Parochial Schools (Regular Education)														
Enrollments as of Oct. 1	K	1	2	3	4	5	6	7	8	9	10	11	12	K-12 TOTAL
	0	0	0	0	0	0	0	0	0	0	0	0	0	n/a

K-12 Home-Schooled Students	
2012	16

K-12 Residents "Choiced-out" or in Charter or Magnet Schools	
2012	1

K-12 SpEd Outplaced Students	
2012	7

K-12 Choiced-In, Tuitioned-In, & Other Non-Residents	
2012	1

The above data were used to assist in the preparation of the enrollment projections. If additional demographic work is needed, please contact our office.